

Installation and Usage of beacon.exe

Introduction

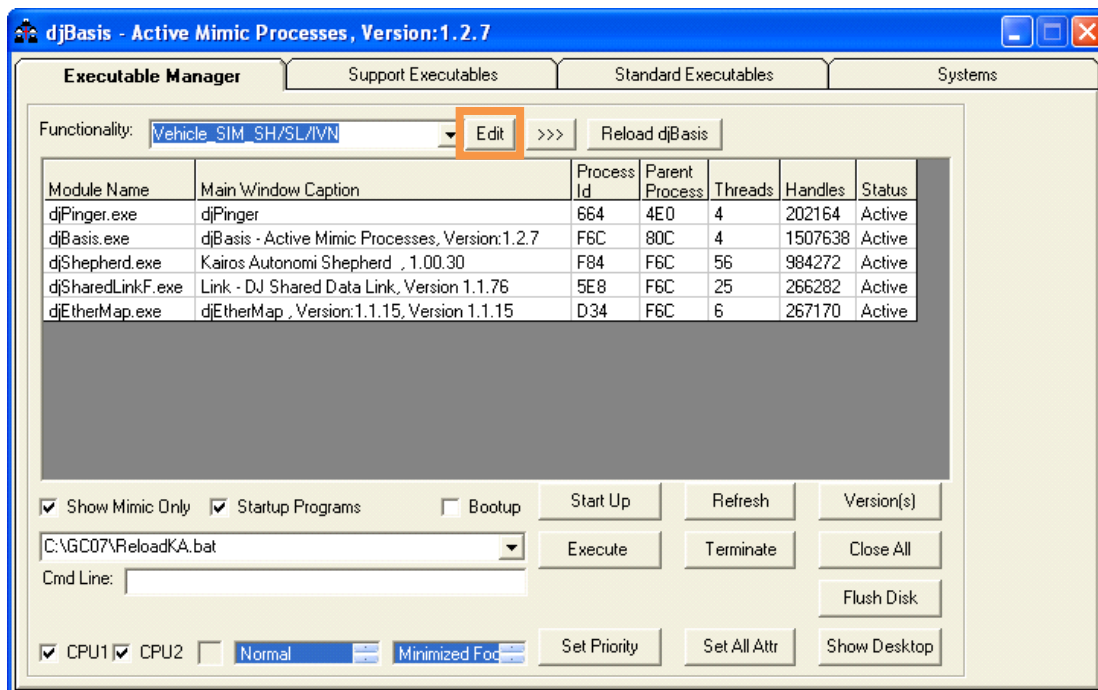
In standard use a physical E-Stop needs to be connected to an OCU. During development use the physical E-Stop can be replaced via beacon.exe. A Vehicle Integration Module (VIM) or VIM Simulator is still required on the Pronto4 itself.

Installation

Copy the beacon.exe file directly into the Pronto4's C:\GC_07\Beacon\ directory (i.e. C:\GC07\Beacon\beacon.exe).

Usage

- To use beacon.exe, the related start-up script must be modified for djBasis. This file can be accessed directly via C:\GC07\StartupFiles.txt or from djBasis, by clicking the "Edit" button next to the start-up drop-down.



- In the StartupFiles.txt file, either an existing functionality set can be modified or a new functionality set can be created.

Modify an existing functionality set:

- In the StartupFiles.txt, locate the functionality set to be modified (e.g., "Shepherd_OCU", "MLT Configuration", etc.).
- Duplicate the djEthermap entry as follows:

```
Exe,C:\GC07\djEthermap.exe,false,3,0,2,3
Exe,C:\GC07\djEthermap.exe,false,3,0,2,3
```

- Edit the lines to comment out one djEthermap and modify the other to Beacon\beacon.exe:

```
`Exe,C:\GC07\djEthermap.exe,false,3,0,2,3
Exe,C:\GC07\Beacon\beacon.exe,false,3,0,2,3
```

```
[Shepherd_OCU]
Exe,C:\GC07\djShepherd.exe,,false,2,0,2,3
Exe,C:\GC07\djSharedLinkF.exe,"/LIST=Shepherd /ENABLE",false,3,0,2,2
`Exe,C:\GC07\djEthermap.exe,,false,3,0,2,3
Exe,C:\GC07\Beacon\beacon.exe,,false,3,0,2,3

[MLT_Configuration]
```

Add a new functionality set:

- a. In the StartupFiles.txt, locate a baseline functionality set to be copied (e.g., “Vehicle_SIM_SH/SL/IVN”, “MLT Configuration”, etc.).
 - b. Duplicate the entire functionality set from “[functionality_set_name]” to the first empty line or line with just a single quote on it.
 - c. Rename the new functionality set.
 - d. Modify the new functionality set’s ethermap line from:

```
Exe,C:\GC07\djEthermap.exe,false,3,0,2,3
```

To:

```
Exe,C:\GC07\Beacon\beacon.exe,false,3,0,2,3
```
3. Save and close the StartupFiles.txt file.
 4. In djBasis, on the “Other” tab, click the “KillBeWise” button.
 5. Once all programs have been closed, double-click the “Basis” shortcut on the desktop.
 6. If djBasis starts with a different functionality set, select the modified or new functionality set, click the “>>>” button, then click the “Reload djBasis” button.

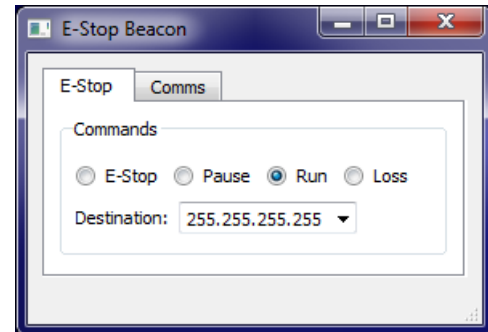
```
[Shepherd_OCU]
Exe,C:\GC07\djShepherd.exe,,false,2,0,2,3
Exe,C:\GC07\djSharedLinkF.exe,"/LIST=Shepherd /ENABLE",false,3,0,2,2
Exe,C:\GC07\djEthermap.exe,,false,3,0,2,3

[Shepherd_OCU_with_Beacon]
Exe,C:\GC07\djShepherd.exe,,false,2,0,2,3
Exe,C:\GC07\djSharedLinkF.exe,"/LIST=Shepherd /ENABLE",false,3,0,2,2
Exe,C:\GC07\Beacon\beacon.exe,,false,3,0,2,3

[MLT_Configuration]
```

Once the correct functionality set is fully loaded the E-Stop Beacon application will be run automatically. The “Destination” is most commonly “255.255.255.255”.

Select the desired state from the four options. “Loss” represents a loss of communications.



Contact Information

Kairos Autonomi
498 W. 8360 S.
Sandy, Utah 84070
801-255-2950 (office)
801-907-7870 (fax)
www.kairosautonomi.com