

Field Replacement of Uomo Servos

Introduction

The modular design of the Pronto4 series, including the Uomo, allow for field replacement of individual servos when necessary.

Please contact Kairos before performing field removal or replacement of servos. Failure to do so may void any warranties.

Procedure

The images are of the throttle servo, but the same procedure applies to all Uomo servos.

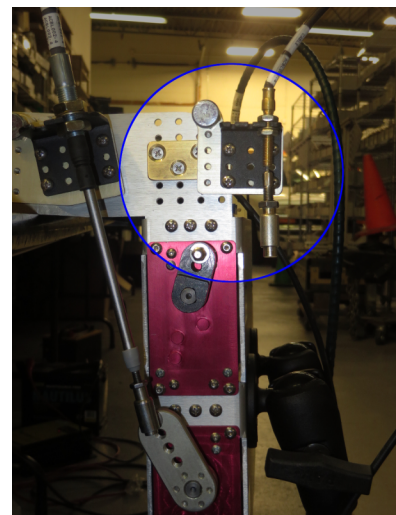
Servo Removal

1. Ensure the Uomo is fully powered down.

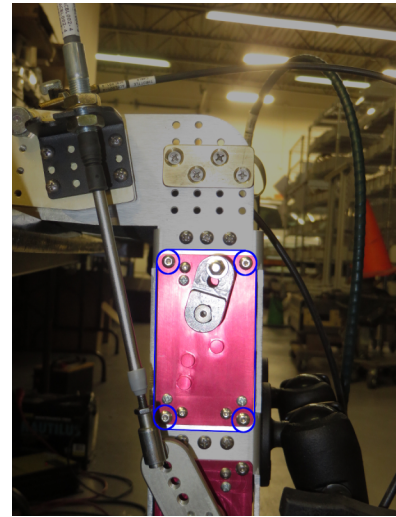
CAUTION

Failure to turn off system power may cause damage and may void any warranty.

2. Note the orientation of the servo being removed.
3. Manually disconnect the corresponding cable's quick disconnect from the servo arm.
4. Pull and rotate the quick release pin for the cable's bracket.
5. Slide the cable's bracket off of the Uomo.



6. Using a 3/32" hex driver, remove the four outer screws that secure the servo module to the Uomo frame. Set these screws aside for later re-installation. If necessary, disconnect the quick disconnect of other servo cables that may prevent access to the screws or removal of the module.
7. Manually pull the servo straight out of the frame. It may be useful to gently move the servo from side to side to initially disconnect the inner connectors.



Servo Replacement

1. Ensure the Uomo is fully powered down.

CAUTION

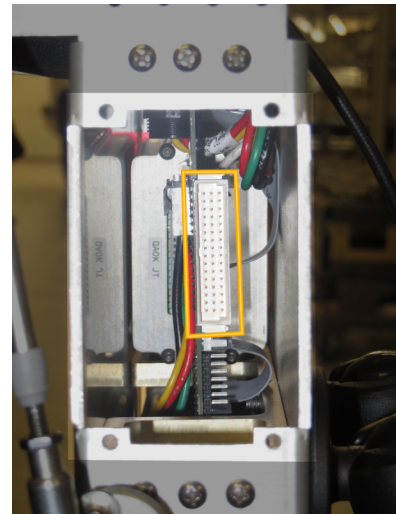
Failure to turn off system power may cause damage and may void any warranty.

2. Prepare to slide the replacement servo into the frame by ensuring:
 - The servo is being placed into the correct location (e.g., a replacement brake servo is being placed in the brake servo location).
 - The servo's faceplate is parallel to the mounting points on the Uomo frame.

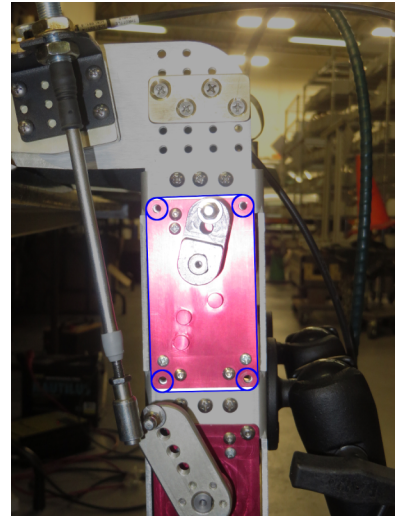
CAUTIONS:

- It is possible to insert a servo upside down. Doing so may cause damage and may void any warranty.
- If the servo's rear connector is not properly aligned with the corresponding Uomo connector, it is highly probable that the Uomo connector pins may be bent, which may void any warranty.

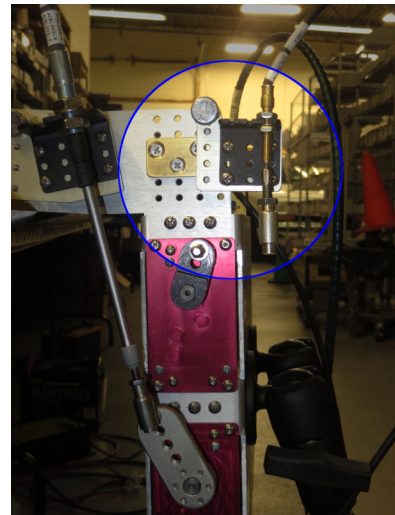
3. Carefully slide the replacement servo into the frame until it is fully seated.



4. Using a 3/32" hex driver, re-secure the four outer screws.



5. Slide the cable's bracket back onto the Uomo.
6. Release the quick release pin.
7. Ensure the cable's bracket is fully seated and secure.



8. Reconnect the corresponding cable's quick disconnect to the servo arm.



Contact Information

Kairos Autonomi
498 West 8360 South
Sandy, Utah 84070 USA
801-255-2950 (office)
801-907-7870 (fax)
www.kairosautonomi.com